

# BALTIMORE

Located in the historic original Power Plant Building in the Inner Harbor, Hard Rock Cafe Baltimore sits between the world-renowned National Aquarium in Baltimore and Harbor Eat. We are within walking distance to the Baltimore Convention Center, Oriole Park at Camden Yards, and M&T Bank Stadium. Discover the best seat in the house and become immersed in our unique and authentic variety of American cuisine and music.

## A GREAT LOCATION FOR....

Corporate Events, Social Parties, Groups, Happy Hour, Live Music.

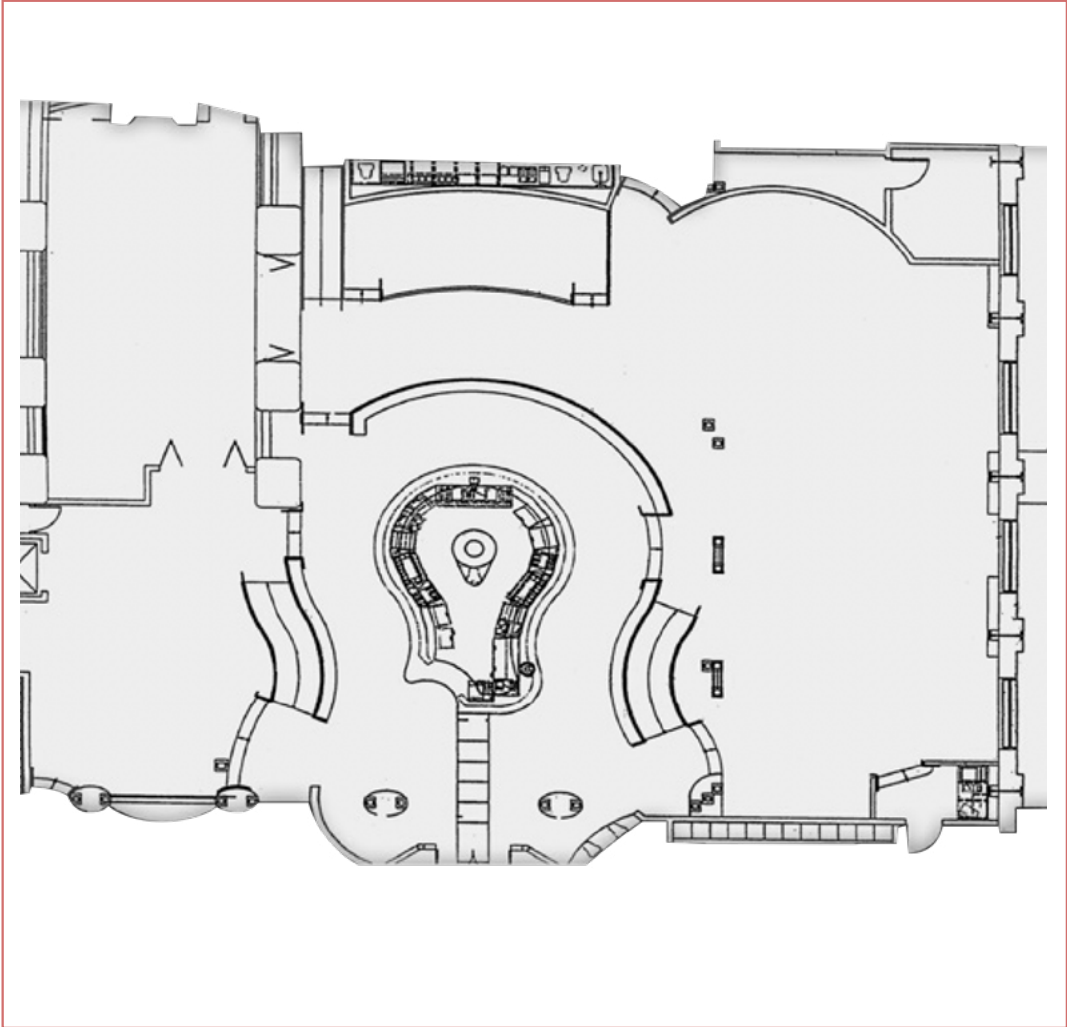
## UNIQUE FEATURES

- PRIVATE DINING ROOM
- PRIME LOCATION
- PIER
- STAGE



# CAFE CAPACITY & FLOOR MAP

## FLOOR MAP



	<b>CAPACITY</b>
<b>CAFE BUYOUT</b>	UP TO 600 PPL
<b>HARBOR SIDE</b>	UP TO 200 PPL
<b>MADONNA DEN</b>	UP TO 120 PPL
<b>BEATLE'S ROOM</b>	UP TO 80 PPL
<b>PIER</b>	UP TO 200 PPL



**WE ARE ABLE TO SUPPORT AND CUSTOMIZE AUDIO VISUAL NEEDS, PLEASE SPEAK TO YOUR HARD ROCK CAFE REPRESENTATIVE REGARDING YOUR REQUIREMENTS.**

# FOR ALL INQUIRIES PLEASE CONTACT US

---

✉ [baltimore\\_social@hardrock.com](mailto:baltimore_social@hardrock.com)

📞 +1.410.347.7625

🌐 [cafe.hardrock.com/baltimore/](http://cafe.hardrock.com/baltimore/)

📘 [hardrockcafebaltimore](https://www.facebook.com/hardrockcafebaltimore)

📷 [hrcbaltimore](https://www.instagram.com/hrcbaltimore)

📍 601 E Pratt St Baltimore, MD 21202

